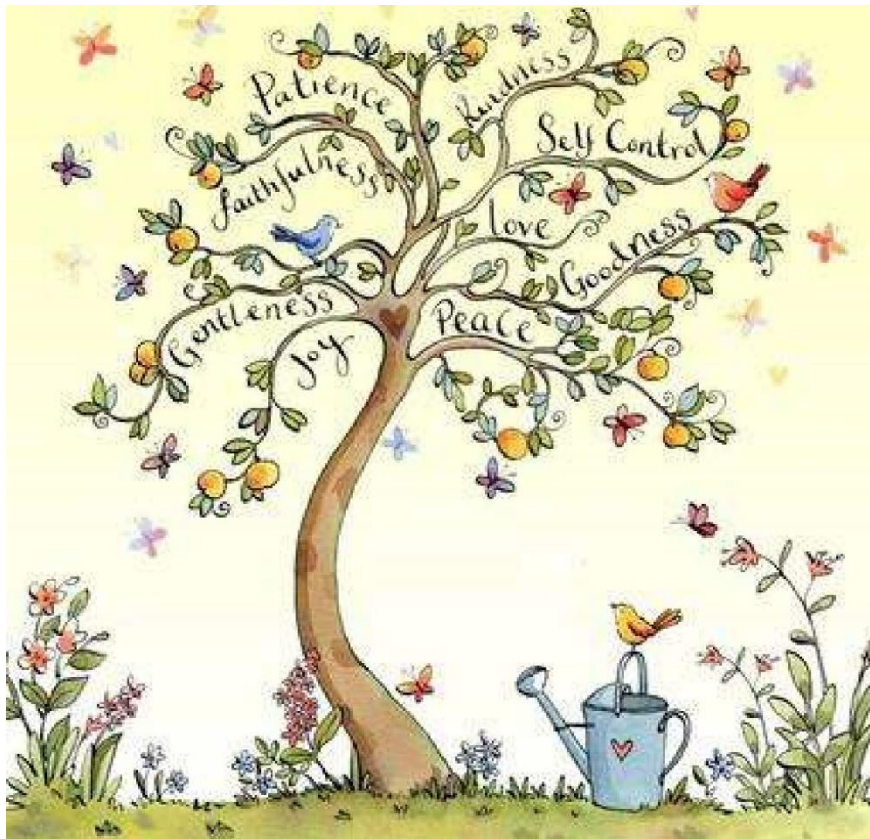


Foston and Terrington  
Federation in partnership  
with Stillington Primary



Welcome Back!

Full Reopening Guidance for  
Parents - March 2021

## **Current guidance for full-opening - March 2021**

The Government guidance has provided us with a context for their decision to request all schools to open to all children from 8<sup>th</sup> March and issued guidance for schools to adhere to and manage when opening. The guidance issued can be found in full [here](#).

At Foston, Terrington and Stillington Primary Schools we have been working hard on our plans for a full reopening ensuring that we:

- Fulfil the expectations required of us.
- Ensure that the safety of everyone is paramount in all our decisions and actions.
- Continue to provide a high quality, well balanced curriculum to best support our pupils in their education.

## **Keeping children and staff safe**

**All schools must comply with health and safety law, which requires them to assess risks and put in place proportionate control measures. Essential measures include:**

- A requirement that people who are ill stay at home
- Robust hand and respiratory hygiene
- Enhanced cleaning arrangements
- Active engagement with NHS Test and Trace
- Formal consideration of how to reduce contacts and maximise distancing between those in school, wherever possible, and minimise potential for contamination so far as is reasonably practicable

All schools have been provided with a set of actions to 'prevent' and 'respond to infection' which are summarised below:

### **Prevention**

- Minimise contact with individuals who are unwell
- Clean hands thoroughly and more often than usual
- Ensure good respiratory hygiene - 'catch it, bin it, kill it'
- Enhanced cleaning
- Minimise contact between individuals and maintain social distancing wherever possible
- Where necessary, staff to wear appropriate personal protective equipment (PPE) eg: if a child exhibits symptoms or personal care is being undertaken

### **Response to any infection**

- Engage with the NHS Test and Trace process
- Manage confirmed cases of coronavirus (COVID-19) amongst the school community
- Contain any outbreak by following local health protection team advice

## **Before Your Child Leaves Home in The Morning**

Please check for any of the following symptoms

- A high temperature
- A new, continuous cough
- A loss of, or change to the sense of smell or taste

If any of these symptoms are evident do not send them to school, contact the school office.

Government advice must be followed, it can be found [here](#).



## **Travel to and from school**

In accordance with our current risk assessment we encourage parents, staff and pupils to walk, use a scooter or cycle to school if at all possible. Children and families should ensure they are following social distancing guidelines whilst travelling to and from school.

Face coverings are required at all times on public transport (including for children, over the age of 11). Parents are required to wear a facemask to enter school site.

## **Return to School Procedures for Parents**

<b>Opening Hours</b>	<ul style="list-style-type: none"><li>• School will be open Monday- Friday, school start and end times will vary dependant on the class/group.</li><li>• Children are expected to attend for the full 5 days, unless they have specific Early years places.</li></ul>																		
<b>Arrival / Collection At School and Staggered Start Times</b>	<ul style="list-style-type: none"><li>• We will stagger the drop off times and collection times at Foston and Terrington to ensure we do not have larger groups on the playground.</li><li>• Siblings will be arrive and leave together at the later drop off / collection time.</li><li>• One parent to drop children off at the school gate where possible and not to enter the school building.</li></ul> <table border="1"><thead><tr><th></th><th><b>Drop off</b></th><th><b>Collection</b></th></tr></thead><tbody><tr><td><b>EYFS KS1 Foston</b></td><td><b>8.45 am</b></td><td><b>3.00 pm</b></td></tr><tr><td><b>KS2 Foston</b></td><td><b>9.00 am</b></td><td><b>3.15 pm</b></td></tr><tr><td><b>EYFS KS1 Terrington</b></td><td><b>8.50 am</b></td><td><b>3.15 pm</b></td></tr><tr><td><b>KS2 Terrington</b></td><td><b>9.00 am</b></td><td><b>3.30 pm</b></td></tr><tr><td><b>Whole school Stillington</b></td><td><b>8.50 - 9.00 am</b></td><td><b>3.15 EYFS/KS1 3.30 KS2</b></td></tr></tbody></table> <ul style="list-style-type: none"><li>• One parent to drop off and collect children, where possible leave siblings at home.</li><li>• At Terrington, parents are asked to meet staff members in the school field at their allotted time. Cones will be distanced for children to line up at. Please can we ask parents to leave immediately, adhering to social distancing rules.</li><li>• At Foston, parents are asked to meet staff members in the school playground at the allotted time. Cones will be distanced for children to line up at cones. Please can we ask parents to leave immediately adhering to social distancing rules.</li><li>• At Stillington, parents are asked to arrive between 8.50 and 9 am and to await instructions from teacher.</li></ul>		<b>Drop off</b>	<b>Collection</b>	<b>EYFS KS1 Foston</b>	<b>8.45 am</b>	<b>3.00 pm</b>	<b>KS2 Foston</b>	<b>9.00 am</b>	<b>3.15 pm</b>	<b>EYFS KS1 Terrington</b>	<b>8.50 am</b>	<b>3.15 pm</b>	<b>KS2 Terrington</b>	<b>9.00 am</b>	<b>3.30 pm</b>	<b>Whole school Stillington</b>	<b>8.50 - 9.00 am</b>	<b>3.15 EYFS/KS1 3.30 KS2</b>
	<b>Drop off</b>	<b>Collection</b>																	
<b>EYFS KS1 Foston</b>	<b>8.45 am</b>	<b>3.00 pm</b>																	
<b>KS2 Foston</b>	<b>9.00 am</b>	<b>3.15 pm</b>																	
<b>EYFS KS1 Terrington</b>	<b>8.50 am</b>	<b>3.15 pm</b>																	
<b>KS2 Terrington</b>	<b>9.00 am</b>	<b>3.30 pm</b>																	
<b>Whole school Stillington</b>	<b>8.50 - 9.00 am</b>	<b>3.15 EYFS/KS1 3.30 KS2</b>																	

	<ul style="list-style-type: none"> <li>• Children to be collected from the same location as above at the time allocated, again parents should leave immediately, adhering to social distancing rules.</li> <li>• Parents entering the school site must wear a face mask. Children are not required to wear a face mask at school.</li> </ul>
<b>Club</b>	<ul style="list-style-type: none"> <li>• Breakfast club and after school club will resume from the start of the Autumn Term as normal.</li> </ul>
<b>Bubble Groups</b>	<p><b>Due to government guidance there is no requirement for children to socially distance in school.</b></p> <p>Children will be allocated to their normal class group for most of their time in school. However, due to the small size of our schools and in order to deliver the full curriculum offer we will be working on a whole school bubble system in some cases to enable lunchtime provision, playtime, catch up interventions and wrap around care.</p> <ul style="list-style-type: none"> <li>• Where possible, children will have the same adult leading their group. Children may be with additional adults for small group work</li> <li>• Children will store coats on the backs of chairs to avoid close contact in cloakroom areas. EYFS children will use pegs in their allocated space</li> <li>• Supply staff will be used as per government guidance if a staff member is ill</li> </ul>
<b>Lunches &amp; Free School Meals</b>	<ul style="list-style-type: none"> <li>• If children bring a packed lunch this should be in a <b><u>washable plastic container or disposable bag.</u></b></li> <li>• Cold school lunches are available daily at Foston and Terrington. These will be prepared onsite at Foston and Terrington to avoid food being brought from other sites and will consist of a sandwich (cheese, ham or tuna), crisps, snack and a piece of fruit.</li> <li>• At Stillington a full school dinner will be available due to dinners being cooked on site.</li> <li>• Fruit will be available for snack for infants, children can bring a healthy snack in their book bag.</li> <li>• Water bottles should be brought in for children to use.</li> <li>• Disposable cups will be available if needed.</li> <li>• Lunches will be eaten at their allocated place in the classroom at Foston and Terrington and the hall at Stillington</li> </ul>
<b>Classroom Organisation</b>	<ul style="list-style-type: none"> <li>• Children will be seated in rows facing forward or L's or U's in KS2. Early Years and KS1 will access a mixture of provision and formal learning.</li> <li>• Children will each have an allocated learning space.</li> <li>• When children are sat on the floor they will be in rows facing forward</li> <li>• We will not be encouraging social distancing as it has been identified by the DFE that this is extremely difficult in primary schools and therefore not required.</li> </ul>
<b>Toilets School</b>	<ul style="list-style-type: none"> <li>• Groups will each be allocated a toilet.</li> <li>• Children should go to the toilet one at a time.</li> </ul>
<b>Lunchtimes / Playtimes</b>	<ul style="list-style-type: none"> <li>• The playground will be used for all fair weather playtimes.</li> <li>• Wet playtimes will be in the hall at Stillington and children will remain in class at Foston and Terrington</li> </ul>
<b>Personal items</b>	<ul style="list-style-type: none"> <li>• Children should wear clean uniform every day.</li> <li>• Spare clothes to be brought into school for nursery and reception, should they have an accident.</li> <li>• Children should bring in a coat.</li> <li>• Sun-cream and hats can be also brought in, but should be clearly labelled. Staff will not be able to apply sun-cream. Please can you ensure this is applied before school.</li> <li>• Book bags, reading books and planners are required.</li> <li>• No Show &amp; Tell items.</li> <li>• Nothing else should be brought into school without prior arrangement.</li> </ul>
<b>P.E</b>	<ul style="list-style-type: none"> <li>• Children should attend school in P.E kit on the day school has a PE coach (Wednesday Stillington / Friday Foston and Terrington).</li> </ul>

	<ul style="list-style-type: none"> <li>For daily PE sessions children should keep in school a pair of trainers to wear.</li> </ul>
<b>Symptoms</b>	<ul style="list-style-type: none"> <li>Please keep children off school if they or any family member show any symptoms.</li> </ul>
<b>Hand Handwashing</b>	<ul style="list-style-type: none"> <li>Children will wash their hands regularly throughout the day.</li> <li>Soap is available in school for the children to use.</li> <li>Other soap can be brought in, if children have sensitive skin. This should be named and will remain on the child's desk throughout the day.</li> </ul>
<b>Hygiene</b>	<ul style="list-style-type: none"> <li>Detergents will be provided in the classrooms for staff to regularly wipe the surfaces and regularly touched places.</li> <li>Staff will regularly empty the bins.</li> <li>Classrooms will be well ventilated throughout the day with windows and doors open.</li> <li>Tissues will be provided in the classroom.</li> </ul>
<b>Learning</b>	<ul style="list-style-type: none"> <li>Children should bring an empty pencil case to keep in school (plastic, not fluffy)</li> <li>Equipment provided by school such as pencils and rubbers will be provided.</li> <li>Our normal school curriculum will resume.</li> <li>Where possible we will seek to teach the children outside.</li> <li>Whole school activities such as collective worship will resume at Stillington but will be done in classes at Foston and Terrington due to larger numbers</li> <li>At Foston &amp; Terrington collective worship will be held in individual classes</li> <li>We will include regular PSHE sessions within our timetable.</li> <li>Children will complete daily PE and will be distanced apart and should have in school a pair of trainers for this purpose</li> </ul>
<b>PPE</b>	<ul style="list-style-type: none"> <li>Staff may wear visors or facemasks in school. Children are not required to wear face coverings.</li> </ul>
<b>If symptoms are shown</b>	<ul style="list-style-type: none"> <li>Children will be taken outside to an allocated bench if fine weather or to a designated indoor area until a parent can collect them.</li> <li>Staff are allowed to use PPE if necessary- face masks, aprons and gloves.</li> <li>Parents will be called to collect the child.</li> <li>Cleaning procedures are in place should a child show symptoms.</li> <li>Family should self-isolate as per guidance and request a test through government procedures.</li> <li>Please keep school informed and discuss this further before any return to school.</li> </ul>
<b>Visitors</b>	<ul style="list-style-type: none"> <li>Parents are asked to only come to school at the drop off and collection times. They should wear face masks on school site.</li> <li>Parents will not be allowed in the school building and communication should be through email, planners or phone.</li> <li>Visitors to the school site will be limited.</li> <li>Any contractors will have to make an appointment with the office and visit out of school hours or for essential work be kept separate from children.</li> <li>Children will attend for the full day unless through prior arrangement organised by school due to individual needs.</li> <li>All children will attend daily except EYFS who already have allocated days.</li> </ul>
<b>Social Distancing</b>	<ul style="list-style-type: none"> <li>Please note, we expect all families to adhere to the current government guidance in relation to social distancing, self-isolation and test, track and trace.</li> </ul>

### **Curriculum for reconnection**

Whilst we are confident that many children will quickly 'bounce back' after the lockdown we are aware that there will be some children returning who have experienced bereavements amongst friends or family or who have experienced anxiety or stress during this time. Regular PSHE sessions and support for children's well-being will be central to our curriculum.

### **Collective positive mindset – contextualising the lockdown**

Our staff do not feel that it is helpful to focus on what has been 'lost' during the shutdown. A young person's school career is typically 468 weeks long and most children have been out of school for 21 weeks, which represents below 5% of their total school career. Moreover, during that time many of our children have been working hard and producing good work and have benefited from time spent with their families, exploring and experiencing different opportunities to grow, learn and achieve in different contexts.

Our staff will remain calm and measured knowing that whatever the situation we have the staff with the best knowledge and experience of how to teach, support and help our children in 'closing the gap' where required. We will not make our children worry unnecessarily or make them think that things are worse than they are and where issues present themselves our language will reflect the can do attitude of our schools.

### **Assessment**

Our teachers will make adaptations establishing 'what has to be learned' rather than sticking rigidly to our usual long-term plans. Class teachers will use their own expertise to establish starting points for each class on our return and will likely have to take 'a step back' in order to help children then move forward with confidence but each child and class will be different. In schools this way of assessing what should be taught next is known as 'formative assessment', that is the judgements teachers make on a day to day basis during class work which allow them to assess attainment and progress. To strengthen routines, relationships and resilience it is important that, in a measured supportive way, teachers and children get back to established ways of working rather than spending too long on a formal testing regime, especially when children's confidence may be low.



### **Broad and balanced curriculum.**

Although there are some restrictions in place (eg singing in large groups) we fully intend to continue with our normal ambitious and broad curriculum in all subjects from the start of the autumn term. We will make use of existing flexibilities to begin at appropriate starting points for all our children, but we will endeavour to ensure that all subjects are covered.

### **Pupils with additional needs.**

We are aware that for some children with additional needs, returning to school after lockdown may cause additional anxiety or stress. Children with additional needs will be supported by the school to ensure a smooth transition when returning to school. In some cases, children with additional needs may require a risk assessment to be completed.

Staff will continue to be responsive to the needs of individual pupils and additional support will be provided where necessary. Small group or 1:1 support may take a different form in the autumn

term so that adults and children remain safe, for example, sitting side by side, staff and pupils working at a greater distance from each other, and working in different parts of the school building. Staff who are in close contact with individual children may wear PPE.

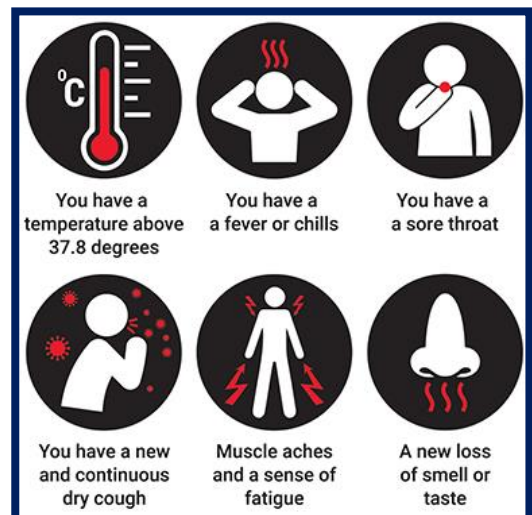
### **Children or staff suspected of having COVID-19**

In line with DfE guidance in the case of a suspected infection the school will:

- engage with the NHS Test and Trace process.  
**We ask that parents and staff inform the school immediately of the outcome of any test;**
- manage confirmed cases of coronavirus (COVID-19) amongst the school community. The school will text or e-mail parents with a notification of a confirmed infection including which 'bubble' this may affect. We will not share the names or details of people suspected of having or conformed to have coronavirus;
- contain any outbreak by following local health protection team advice. For the avoidance of doubt the new advice says that we 'must send home those people who have been in **close contact** with the person who has tested positive, advising them to self-isolate for 10 days since they were last in close contact with that person when they were infectious.

'Close contact' now means:

- face to face contact with an infected individual for any length of time, within 1 metre, including being coughed on, a face to face conversation, or unprotected physical contact (skin-to-skin);
- proximity contacts - extended close contact (within 1 to 2 metres for more than 15 minutes) with an infected individual;
- travelling in a small vehicle, like a car, with an infected person.



- When a case is suspected in school the child will be immediately isolated from other pupils and staff. Staff supervising these children should also try to ensure they remain two metres away while still aiming to provide the reassurance and care particularly young children will need. Enhanced PPE is available for these staff and older children may be offered a mask. The school will contact parents and request they collect their child from the school immediately.
- We ask that parents whose child has been identified as having a suspected case of COVID-19 should seek immediate medical advice.

The guidance says '*Anyone who displays symptoms of coronavirus (COVID-19) can and should get a test.*'

If no test is undertaken then we expect children to self-isolate according to the Public Health England guidance here: <https://www.gov.uk/government/publications/covid-19-stay-at-home-guidance/stay-at-home-guidance-for-households-with-possible-coronavirus-covid-19-infection>

**Households with a confirmed case of Coronavirus** should follow the advice laid out by Public Health England here: <https://www.gov.uk/government/publications/covid-19-stay-at-home-guidance>

regarding isolation and should keep their school informed about their planned date of return following isolation.

### **Testing of Staff and Families**

As you might be aware all school staff are already undertaking twice weekly lateral flow tests for covid. In addition to this, the government has confirmed twice-weekly testing using rapid lateral flow tests will be given for free to all families and households with primary, secondary school and college aged children and young people, including childcare and support bubbles, to help find more COVID-19 cases and break chains of transmission.

Rapid testing detects cases quickly – in under 30 minutes – meaning positive cases can isolate immediately. This can be the difference between children being able to stay in school, or a class being sent home due to an outbreak. It could also be the difference between a workplace having to close for a period, or being able to stay open and running.

I am sure you will agree this will give added reassurance to our school families.

Please find the links below with further details and information on how to order your tests online:

<https://www.gov.uk/guidance/rapid-lateral-flow-testing-for-households-and-bubbles-of-school-pupils-and-staff>

<https://www.gov.uk/order-coronavirus-rapid-lateral-flow-tests>